



Beaufort County Public Works
Stormwater Infrastructure
Project Summary

Project Summary: Marquis Way

Project #: 2010-252

Completed: Jun-10

Narrative Description of Project:
Replaced (1) driveway pipe.

Material Cost, Rental Equipment Summary, and Labor

Material	Unit	Cost/Unit	Qty	Cost
15" RCP Pipe	linear feet	\$9.62	24.0	\$230.88
Fill Dirt	ton	\$1.00	5.3	\$5.30
Concrete	ton	\$96.30	3.5	\$337.05
Silt Fence	sy	\$0.78	3.9	\$3.03
4ft Flagger	each	\$0.34	4.0	\$1.36
Caution Tape	roll	\$14.55	0.20	\$2.91
Concrete Accessories				\$16.18
Diesel	gallon	\$2.35	56.0	\$131.60
Gas	gallon	\$2.39	34.0	\$81.26
Labor	hours		146.0	\$4,963.14
Total Cost of Materials, Rental Equip., and Labor				\$5,772.71

Note: Labor cost includes the employee's salary plus fringe benefits.

Equipment Cost

Item	Asset	Cost/Hour	Hrs.	Cost
JD Loader 444J	23271	\$29.75	2.0	\$59.50
JCB Backhoe	22810	\$36.50	4.0	\$146.00
Bobcat T320	23388	\$21.00	3.0	\$63.00
Dump Trucks		\$16.68	25.0	\$417.00
Pickup Trucks		\$4.17	44.0	\$183.48
Total Equipment Cost				\$868.98

Cost/hour excludes fuel cost.

Total Cost: \$6,641.69

Site Photographs

Before

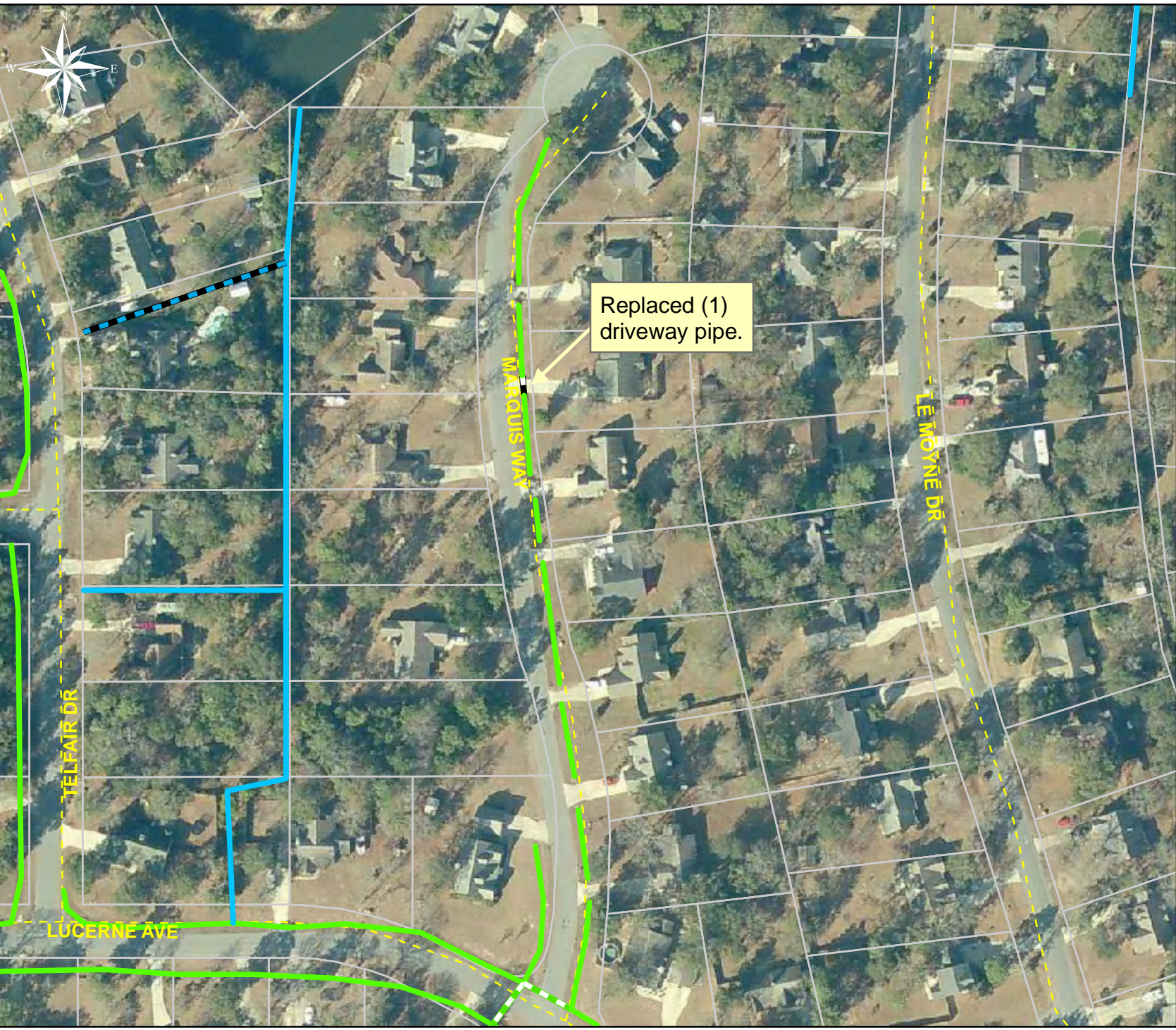


During



After





Project: Marquis Way

Activity: Drainage Maintenance

Project #: 2010-252

Township: Lady's Island

Completed: June 2010

Legend

Drainage Type

- River
- Stream
- Outfall
- Lateral
- Lateral Pipe
- Roadside
- Roadside Pipe
- Crossline
- D/W
- Access
- Piped
- Bleeder
- Parcels